



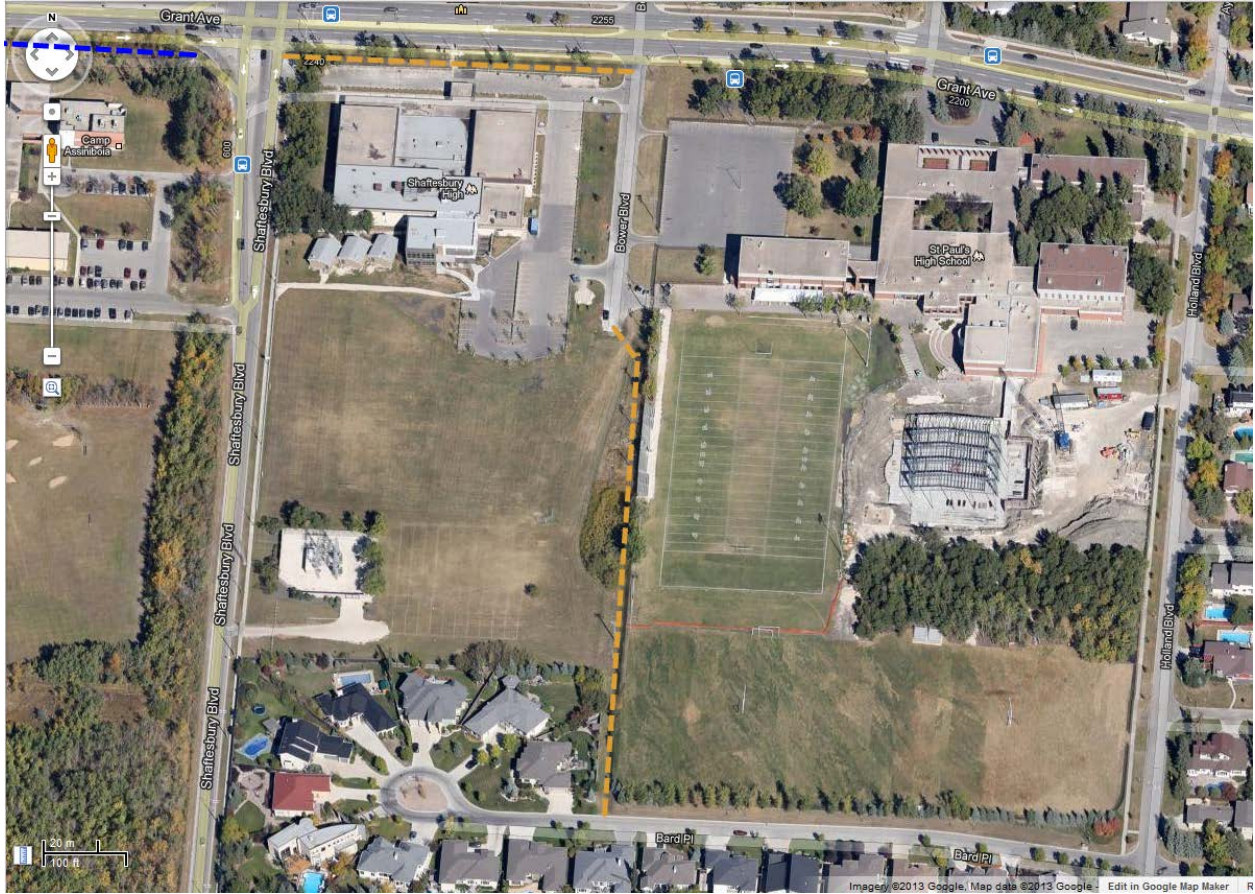
Presentation To the Standing Policy Committee on Property and Development

Tuesday April 9, 2013

Re: Agenda Item # 10 - Declaration of Surplus Land - South of Bower Boulevard, south of Grant Avenue and east of Shaftesbury Boulevard, shown as Parcel A” and Parcel “B” on the attached Misc. Plan 14397

Bike to the Future recommends that the committee reject the recommendation to declare the two parcels of land shown as Parcel “A” and “B” on misc. plan 14397 as surplus lands, or that the order be amended to include an easement that would allow for a future active transportation pathway along the Bower right of way connecting to Bard Pl.

We see potential for these properties to be integrated into the City of Winnipeg's pedestrian and bicycle network as a low stress link from South Tuxedo to both Shaftesbury High School and to the existing multi-use pathways along Grant Avenue and Shaftesbury Boulevard. We have previously made submissions to the City with regard to this possibility (see page 6 of our [submission](#) regarding the Charleswood Transportation Study).



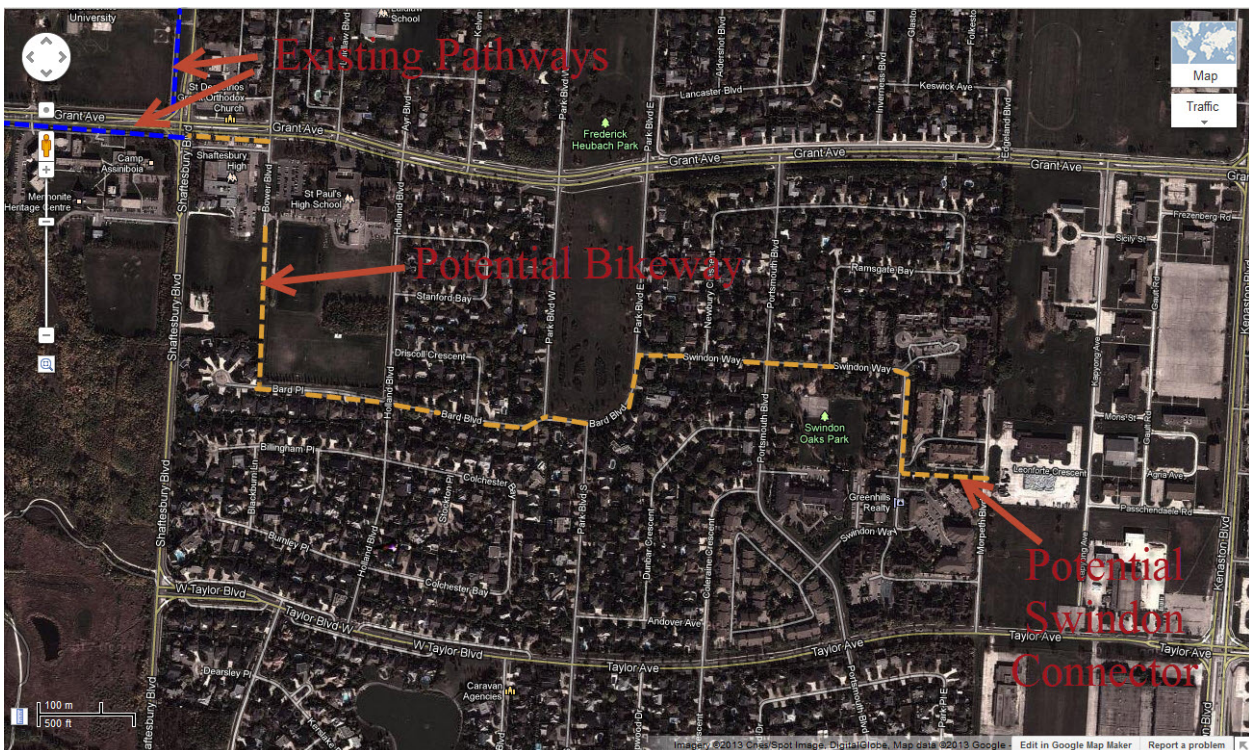
Potential AT connection between Bard Pl. and Grant/Shaftesbury Trails

We feel that by connecting directly to Bard Pl, the Bower right of way would create an excellent connection from your school into the South Tuxedo neighbourhood via low volume streets that would be more attractive to potential cyclists than travel along Grant Avenue in higher speed, higher volume traffic.



Bard Pl. offers a low stress, low volume access route to the Bower right of Way

Ideally, we envision this connection linking up with the existing pathways along Grant and Shaftesbury, and via Bard and Swindon into the Kapyong Barracks redevelopment (possibly via an extension of the Swindon Oaks pathway).



Kapyong Connections

At this point, we would be asking only for the retention of an easement, as the decision to build any actual trail would be dependent on the result of further neighbourhood and stakeholder consultation.

Sincerely,

Mark Cohoe
Executive Director
Bike to the Future
www.biketothefuture.org